

**SVENDBORG BRAKES™**  
A REGAL REYNOLD BRAND

# SUPERIOR BRAKING SOLUTIONS

---

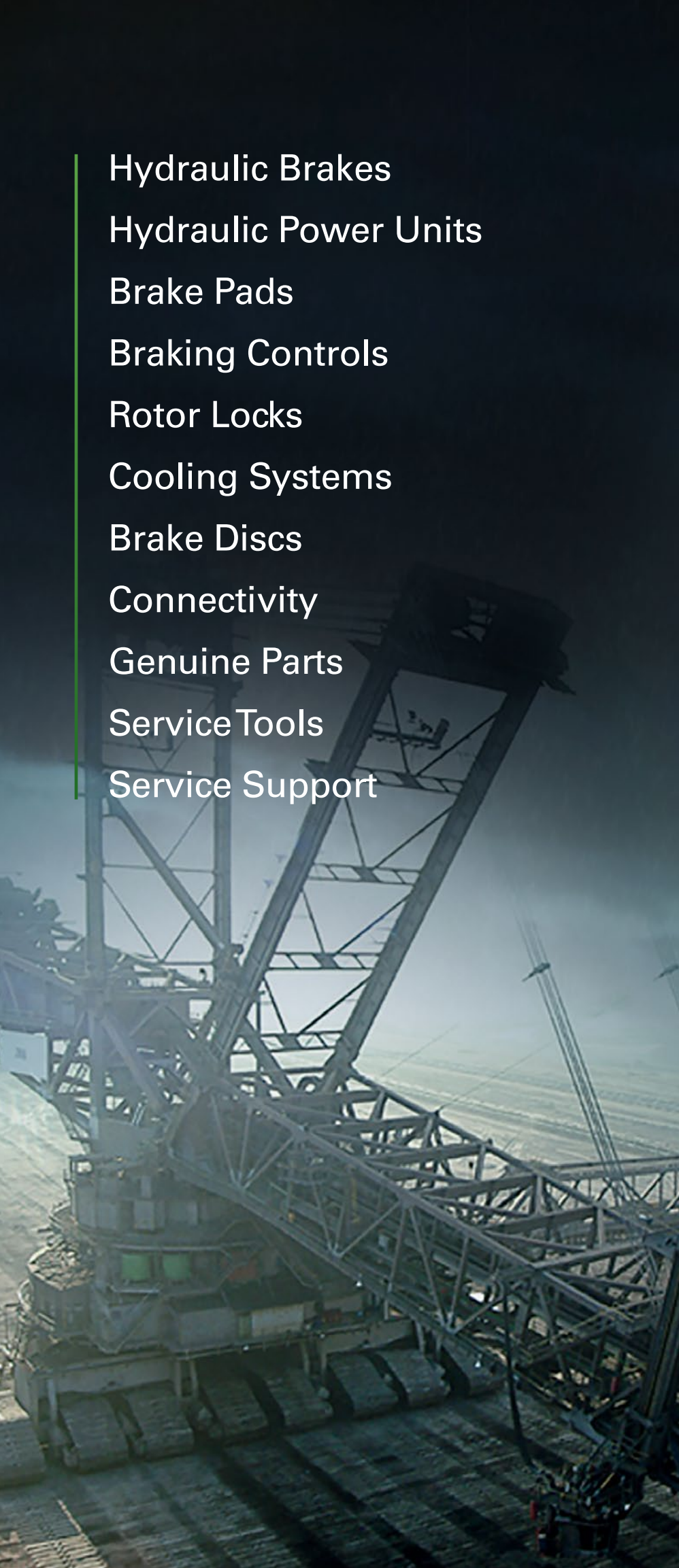


Svendborg Brakes, part of Regal Rexnord,  
is the innovator of **industrial** brake  
configurations and pioneers within  
hydraulic **braking** systems,  
connectivity solutions, **power**  
**transmission** and  
**motion control**  
products.

**Craftsmanship** and  
**innovation** excellence  
since **1884.**







Hydraulic Brakes

Hydraulic Power Units

Brake Pads

Braking Controls

Rotor Locks

Cooling Systems

Brake Discs

Connectivity

Genuine Parts

Service Tools

Service Support

# STANDARD FAILSAFE BRAKES

## SPRING APPLIED / HYDRAULIC RELEASED

### BSFI 100 Monospring

Clamping force: 0 to 3.000 N  
Brake pad distance (w): = 0,046m  
Weight: 7kg

Key Markets:

Renewable Energy, Cranes



### BSFI 200 Dualspring

Clamping force: 0 to 12.000 N  
Brake pad distance (w): = 0,07m  
Weight: 19kg



### BSFI 200 Monospring

Clamping force: 0 to 12.000 N  
Brake pad distance (w): = 0,07m  
Weight: 19kg



Key Markets:

Renewable Energy, Mining & Aggregate, Crane & Hoist, Elevators & People Movers, Power Generation

### BSFI 300 Dualspring E-version

Clamping force: 0 to 60.000 N  
Brake pad distance (w): = 0,13m  
Weight: 65kg



### BSFI 300 Monospring E-version

Clamping force: 0 to 60.000 N  
Brake pad distance (w): = 0,13m  
Weight: 85kg



Key Markets:

Renewable Energy, Mining & Aggregate, Oil & Gas, Crane & Hoist, Marine, Metals Market, Elevators & People Movers, Power Generation, Water & Wastewater

### BSFI 300 Dualspring EE-version

Clamping force: 0 to 60.000 N  
Brake pad distance (w): = 0,13m  
Weight: 70kg



### BSFI 300 Monospring EE-version

Clamping force: 0 to 60.000 N  
Brake pad distance (w): = 0,13m  
Weight: 85kg



Key Markets:

Renewable Energy, Mining & Aggregate, Oil & Gas, Crane & Hoist, Marine, Metals Market, Elevators & People Movers, Power Generation, Water & Wastewater

## BSFI 3000 Dualspring

Clamping force: 0 to 120.000 N

Brake pad distance (w):= 0,20m

Weight: 150kg

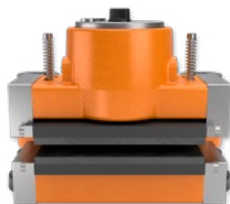


## BSFI 3000 Monospring

Clamping force: 0 to 120.000 N

Brake pad distance (w):= 0,20m

Weight: 180kg



### Key Markets:

Renewable Energy, Mining & Aggregate, Oil & Gas, Crane & Hoist, Marine, Metals Market, Elevators & People Movers, Power Generation

## BSFG 400 Dualspring

Clamping force: 0 to 120.000 N

Brake pad distance (w): = 0,22m

Weight: 250k



Available as DUALspring only. Mechanically engineered and certified to comply with the strict mine regulations in various locations. Specially designed for mine hoists applications.

### Key Markets:

Mining & Aggregate

## BSFH 500 Dualspring

Clamping force: 0 to 200.000 N

Brake pad distance (w): = 0,22m

Weight: 300kg

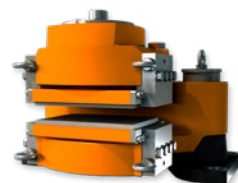


## BSFH 500 Monospring

Clamping force: 0 to 200.000 N

Brake pad distance (w): = 0,22m

Weight: 480kg



### Key Markets:

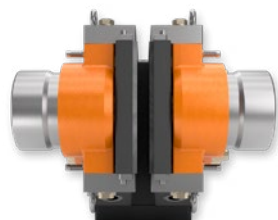
Mining & Aggregate, Oil & Gas, Crane & Hoist, Marine, Metals Market, Elevators & People Movers, Power Generation

## BSFK 500 Dualspring

Clamping force: 0 to 350.000 N

Brake pad distance (w): = 0,23m

Weight: 330kg



## BSFK 500 Monospring

Clamping force: 0 to 350.000 N

Brake pad distance (w): = 0,23m

Weight: 550kg



### Key Markets:

Mining & Aggregate, Oil & Gas, Crane & Hoist, Marine

## BSFB 600 DUALspring

Clamping force: 0 to 500.000 N

Brake pad distance (w): = 0,30m

Weight: 750kg



## BSFB 600 MONOspring

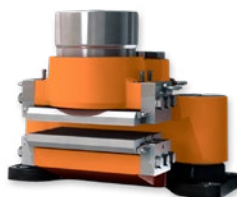
Clamping force: 0 to 400.000 N

Brake pad distance (w): = 0,30m

Weight: 840kg

Key Markets:

Mining & Aggregate, Oil & Gas, Crane & Hoist, Marine



## BSFA 1000 Monospring

Clamping force: 0 to 1.100.000 N

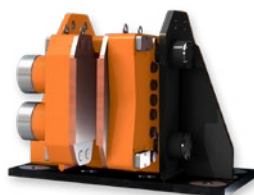
Brake pad distance (w): = 0,30m

Weight: 1450kg-1600kg

The BSFA 1000 MS Brake, is specifically designed and engineered for SAG & BALL Mill applications.

Key Markets:

Mining & Aggregate



## BSFI D300 Double Piston Dualspring

Clamping force: 0 to 120.000 N

Brake pad distance (w): = 0,12m

Weight: 250kg

## BSFI D300 Double Piston MONOspring

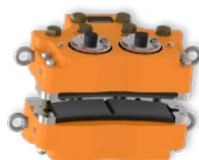
Clamping force: 0 to 120.000 N

Brake pad distance (w): = 0,12m

Weight: 300kg-340kg

Key Markets:

Oil & Gas, Crane & Hoist, Marine



## BSFI D3000 Double Piston Dualspring

Clamping force: 0 to 240.000 N

Brake pad distance (w): = 0,156m

Weight: 450kg

## BSFI D3000 Double Piston MONOspring

Clamping force: 0 to 240.000 N

Brake pad distance (w): = 0,156m

Weight: 515kg-560kg

Key Markets:

Oil & Gas, Crane & Hoist, Marine



## BSFH D500 Double Piston Dualspring

Clamping force: 0 to 400.000 N

Brake pad distance (w): = 0,207m

Weight: 780kg

## BSFH D500 Double Piston MONOspring

Clamping force: 0 to 400.000 N

Brake pad distance (w): = 0,207m

Weight: 910kg-1000kg

Key Markets:

Oil & Gas, Crane & Hoist, Marine





# STANDARD ACTIVE BRAKES

## HYDRAULIC APPLIED / SPRING RELEASED

### BSAB 50 Dualaction

Rear + Side Mounted

Brake pad distance (w): 0,056m

Weight: 11kg

Rear Mounted: Clamping force: 0 to 32.400 N

Side mounted: Clamping force: 0 to 24.500 N

Key Markets:

Renewable Energy, Oil & Gas



### BSAB 75 Dualaction

Clamping force: 0 to 141.000 N

Brake pad distance (w): 0,102m

Weight: 53kg



### BSAB 90 Dualaction

Clamping force: 0 to 235.000 N

Brake pad distance (w): 0,102m

Weight: 55kg



### BSAB/C 120 Dualaction

Clamping force: 0 to 628.000 N

Brake pad distance (w): 0,136m

Weight: 170kg-198kg



BSAB 120



BSAC 120 DD

Multi-piston DUALaction brakes with removable or fixed pad holders. Typical applications for the BSAB brake range: yawing systems (wind turbines), slewing systems (cranes), shaft brakes (vessels), and top drive brakes (drilling rigs).

Key Markets:

Renewable Energy, Marine

### BSAK 300 Dualaction

Clamping force: 0 to 55.000 N

Brake pad distance (w): 0,13m

Weight: 48kg

### BSAK 300 Monoaction

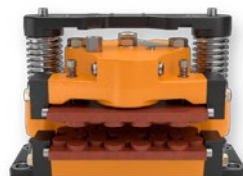
Clamping force: 0 to 55.000 N

Brake pad distance (w): 0,13m

Weight: 73kg

Key Markets:

Renewable Energy, Metals Market, Power Generation



### BSAK 3000 Dualaction

Clamping force: 0 to 130.000 N\*

Brake pad distance (w): 0,20m

Weight: 130kg

### BSAK 3000 Monoaction

Clamping force: 0 to 130.000 N\*

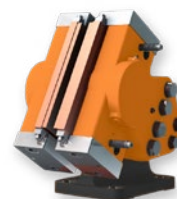
Brake pad distance (w): 0,20m

Weight: 160kg

\*Available with higher clamping force using double- and quad piston designs

Key Markets:

Renewable Energy, Metals Market, Power Generation



## BSAH 500 Dualaction + MONOaction

Clamping force: 0 to 200.000 N\*

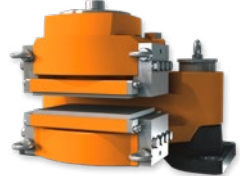
Brake pad distance (w): 0,22m

Weight: 780kg - 1000kg

\*Available with higher clamping force using double- and quad piston designs

Key Markets:

Metals Market, Marine



# POWER UNITS, CONNECTIVITY & MORE

## POWER UNITS

Thousands of installations around the world testify the reliability of our hydraulic power units.

For direct drive and conventional wind turbines | Certified pressure control valve to ensure pressure relief in case of control failures | Operational in cold and hot climate environment |



## SOFT BRAKING CONTROLS

Industrial-grade embedded PC | Built-in MODBUS TCP/IP interface | Custom optimized IP67 communications module | EtherCat-based internal network | Full BUS monitoring | Optional cable redundancy | Fast hydraulic operation | Optional manual operation |



## CONNECTIVITY

New software and artificial intelligence enables a more integrated and predictive process which optimizes uptime throughout the whole value chain.

Gateway | Universal Control | Monitoring



## GENUINE SPARE PARTS

Supported by our 24/7 service support, we deliver OEM approved genuine spare parts.

- Brake pads
- Service/maintenance kits
- Indicators
- Supported by Authentication App



## SERVICE TOOLS

Exclusive and innovative service/maintenance tools specifically developed to improve safety, extend product lifespan while minimizing downtime.

- Lifting & installation tool
- Disc resurfacing tool
- Yaw noise reduction groove tool



## SERVICE TEAMS

Our certified service teams work independently or with other service technicians during global service/maintenance campaigns.

- Job-specific training
- On-site training
- Training academy courses
- 24/7 Service support






**SVENDBORG BRAKES™**

A REGAL REXNORD BRAND





# Wind Marine Cranes

## mining Oil & Gas Hydro Tidal

### Regal Rexnord

sb@svendborg-brakes.com | Tel: +45 63 255 255  
www.svendborg-brakes.com | regalrexnord.com

The proper selection and application of products and components, including assuring that the product is safe for its intended use, are the responsibility of the customer. To view our Application Considerations, please visit <https://www.regalrexnord.com/Application-Considerations>.

To view our Standard Terms and Conditions of Sale, please visit <https://www.regalrexnord.com/Terms-and-Conditions-of-Sale>.

"Regal Rexnord" is not indicative of legal entity. Refer to product purchase documentation for the applicable legal entity. Regal Rexnord and Svendborg Brakes are trademarks of Regal Rexnord Corporation or one of its affiliated companies.

© 2023, 2024 Regal Rexnord Corporation, All Rights Reserved. MCB P-9052-SV | 05-2024